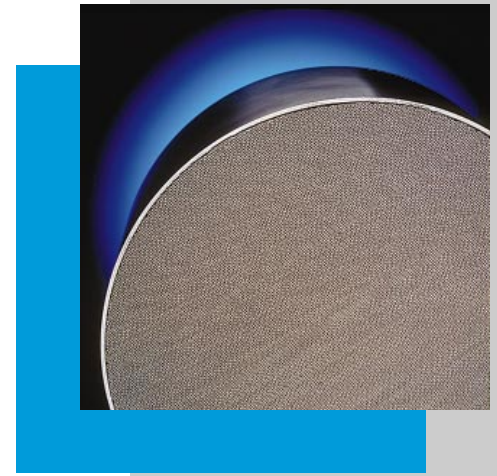
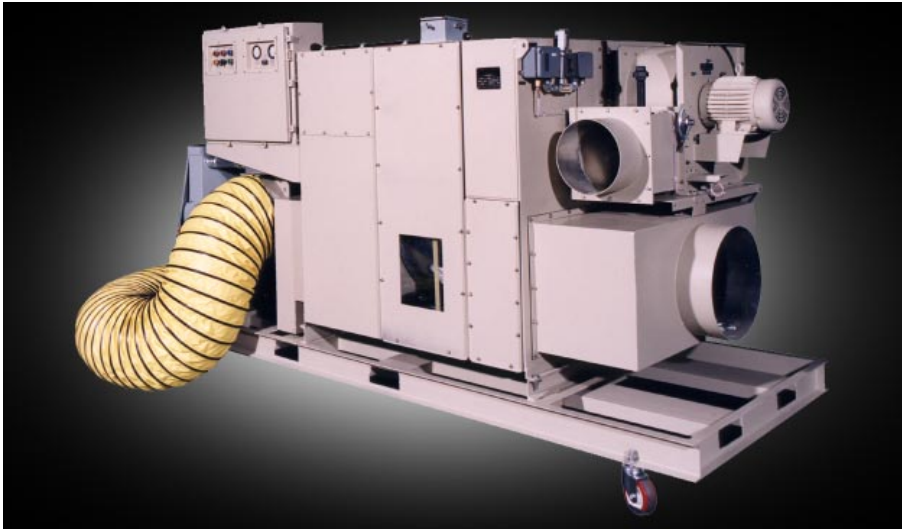


MOISTURE CONTROL SERVICES

MODEL HC-4500-MCS



ADVANTAGES

Munters desiccant dehumidifier with modular design offers:

- Weather-tight construction for indoor or outdoor use.
- Low profile cassette design.
- Quick access for easy maintenance.
- Modulating electric, optional: gas or steam.
- Titanium Silica gel desiccant provides durable, dependable performance.
- Light weight aluminum construction

HONEYCOMBE® WHEEL TECHNOLOGY

Munters' HoneyCombe® rotor is at the heart of the desiccant technology. Air to be dehumidified enters the dehumidifier and is passed through the HoneyCombe® desiccant wheel. The desiccant HoneyCombe® structure, attracts water molecules directly from the air, lowering the humidity. To remove the captured moisture, a small section of the wheel is heated by a warm air stream. This exhaust stream, then, carries away the collected moisture. The continuous rotation allows for the dehumidifier's uninterrupted operation.

FEATURES

Process Air: Flow rates of 4500 scfm. Nominal moisture removal: 119 lbs/hr at 75°F, 50% RH at 4500 scfm. Delivered air moisture levels of -55°F dewpoint and lower are attainable.

Contact Air Seals: Separate process and reactivation air pressures up to 8" W.G. with 5-year life expectancy.

Process and Reactivation Fans: Centrifugal, direct drive with totally enclosed fan cooled motors.

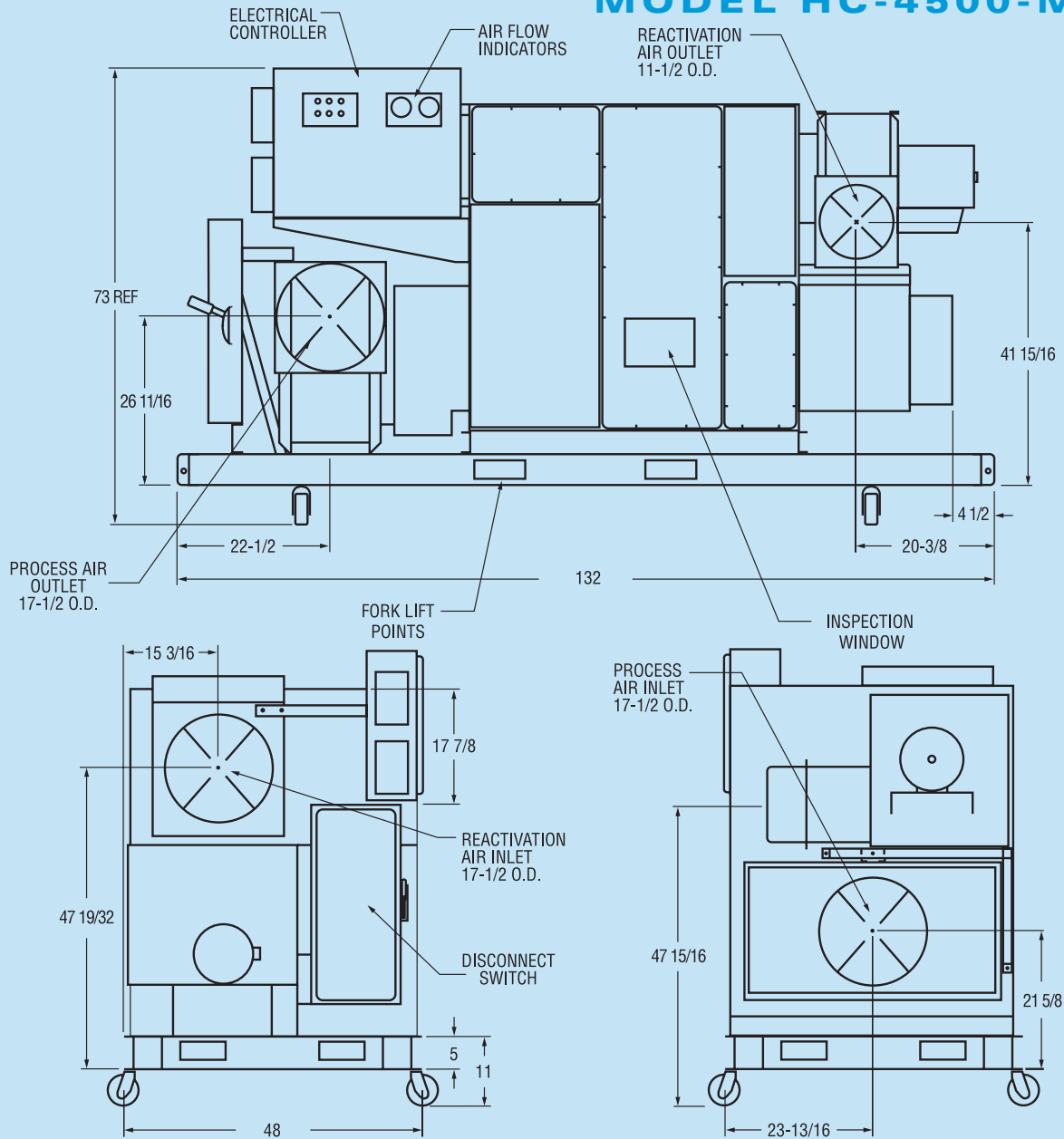
Electrical Controls: Continuous automatic operation including motor starters, overload protective devices, full controls with indicating lights and fault circuits. All wiring to NEC codes.

Drive System: Simple drive belt arrangement with few moving parts.

Reactivation Utility: Electric with solid state proportioning control. Optional: steam with proportional air volume control, or gas direct with modulating gas valve for natural or propane gas.

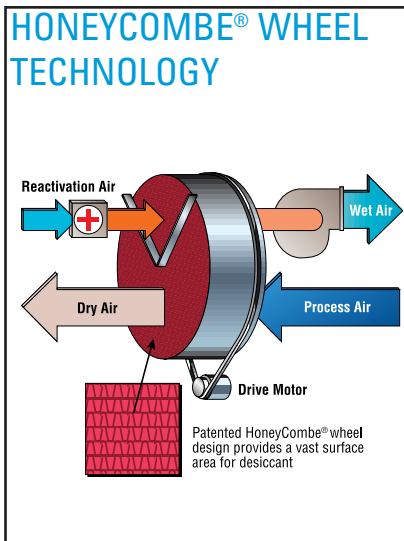
Dehumidifier Housing: Process and reactivation air flow insulation. Durable air-dry polyurethane paint. All welded aluminum cabinet.

MODEL HC-4500-MCS



SPECIFICATIONS

- Maximum Dimensions: 132”L 48”W 73”H
- Maximum Weight: 2200#
- Power Requirements: 107 AMPS/460 Volts
- Generator Required: 100KW Min. for electric 40KW Min. for gas or steam
- Fuel Required: 8g/h diesel for electric 2.5g/h diesel for gas or steam 2 - 5 cubic ft natural gas/hour 3 - 5 gal/hour of propane NFPA 255 - ASTM E84 compliant
- Airflow: 2250-4500 scfm



Moisture Control Services

Munters Corporation
Moisture Control Division

2008 Bloomingdale Road
Glendale Heights, IL 60139

Tel: 1-800 I CAN DRY

Fax: 1-630-351-7365

Web: www.muntersamerica.com

e-mail:

mcsinfo@muntersamerica.com

